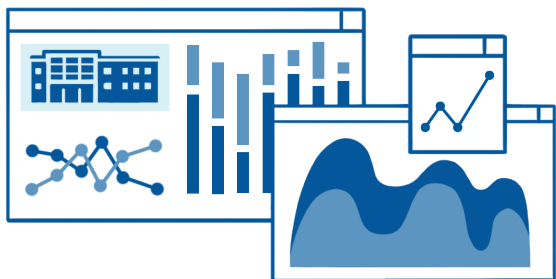


Assessing Postdoctoral Researchers at Federally Funded Research and Development Centers in the United States



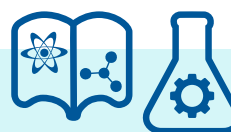
The Survey of Postdocs at Federally Funded Research and Development Centers

Federally funded research and development centers (FFRDCs) are some of the preeminent research facilities in the United States. Postdoctoral researchers (postdocs) perform high-level research in FFRDCs while gaining additional training to advance both their careers and strategic federal research.

What is the FFRDC Postdoc Survey?

The Survey of Postdocs at Federally Funded Research and Development Centers (FFRDC Postdoc Survey) provides information about the demographic characteristics, sources of financial support, and fields of research of postdocs working at FFRDCs. It is conducted as part of the Survey of Graduate Students and Postdoctorates in Science and Engineering, which is sponsored by the National Center for Science and Engineering Statistics (NCSES) within the U.S. National Science Foundation and by the National Institutes of Health.

How can I use the FFRDC Postdoc Survey?

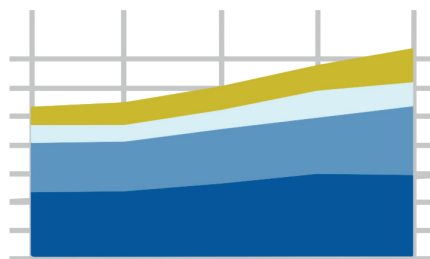


Data from the FFRDC Postdoc Survey can answer questions like

- How many postdocs are employed at FFRDCs?
- What is the source of support for postdocs employed at FFRDCs?
- What are the characteristics (sex, citizenship, ethnicity, and race) of postdocs at FFRDCs?
- What is the field of research of postdocs at FFRDCs, by FFRDC type and citizenship status?
- How many postdocs at FFRDCs are temporary visa holders?

Why is the FFRDC Postdoc Survey important?

The FFRDC Postdoc Survey provides some of the only publicly available data on the employment of postdocs at FFRDCs in the United States and the type of work being done at these centers. For more information, the **FFRDC Postdoc Survey homepage** (<https://nces.nsf.gov/surveys/ffrdc-postdocs>) features additional details about the survey, its questionnaires, and links to related publications and products.



Data details

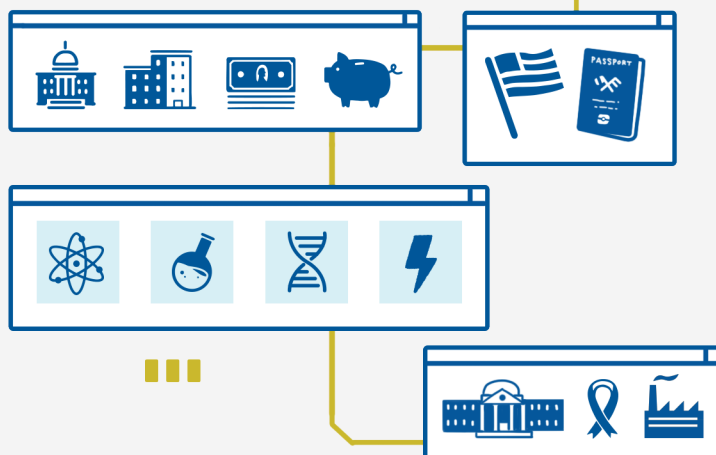
Where can I find FFRDC Postdoc Survey data?

The FFRDC Postdoc Survey data can be found in several places throughout the NCSES website. On the survey's [homepage](#), the Data tab offers data tables that can be downloaded by users, and the Analysis tab chronicles all NCSES publications that use the survey's data. The current Master Government List of FFRDCs that is used for this survey's data collection can be found at <https://nces.nsf.gov/resource/master-gov-lists-ffrdc>.



FFRDCs report information about their postdoctoral researchers such as

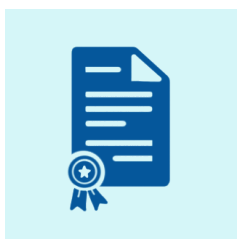
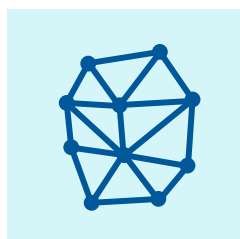
- Sex and citizenship
- Source of financial support
- Ethnicity and race for U.S. citizens and permanent residents
- Field of research
- Administrative type of the FFRDC (university, nonprofit, and industry)



The FFRDC Postdoc Survey reports data on postdoctoral researchers and their fields of research at FFRDCs. To explore more data regarding FFRDCs, see the **FFRDC Research and Development Survey** at <https://nces.nsf.gov/surveys/ffrdc-research-development>.

Products supported by FFRDC Postdoc Survey data

FFRDC Postdoc Survey data are used in NCSES publications, such as analytical reports and data tables. Its data also supplement *Science and Engineering Indicators*.



Survey specifics

Frequency: Biennial

Initial survey year: 2005

Reference period: 1 October of the survey year

Response unit: FFRDC

Sample or census: Census

Population size: 41 FFRDCs

Sample size: The survey is a census of all known eligible FFRDCs



National Center for Science and Engineering Statistics (NCSES)

For more information about NCSES's products and data collection process, visit <https://nces.nsf.gov>. You can also explore our Surveys page at <https://nces.nsf.gov/surveys> to learn more about NCSES surveys and the FFRDC Postdoc Survey, as well as its methodology, survey design, and questionnaires.