

Understanding State Government Investments in Research and Development



The Survey of State Government Research and Development

State government funding of research and development (R&D) can serve as an investment into the state's economy and population. By providing funds for R&D, state governments may encourage innovation and create new jobs, as well as attract private investments within the state.

What is the Survey of State Government R&D?

The Survey of State Government R&D measures the extent of R&D activities performed and funded by the government agencies in each of the nation's 50 states, the District of Columbia, and Puerto Rico. The survey is an annual census of state government departments, agencies, commissions, public authorities, and dependent entities with R&D activities. It is conducted by the National Center for Science and Engineering Statistics (NCSES) within the U.S. National Science Foundation.

How can I use the Survey of State Government R&D?

Data from the Survey of State Government R&D can answer questions like

- Which state government had the highest R&D expenditures?
- Which type of R&D performers received the most funding in each state?
- How much money did state governments spend on health-related R&D in a certain year?
- Which state departments or agencies funded R&D performers in each state?
- How many R&D personnel are employed within each state government?



Why is the Survey of State Government R&D important?

The Survey of State Government R&D is the only source for comprehensive, uniform statistics about specific state agencies' expenditures on R&D activities. By providing data on R&D funded by individual states, this survey allows data users to understand the role state governments play in the nation's R&D portfolio. These data also assist policymakers in identifying how different state governments invest in R&D.

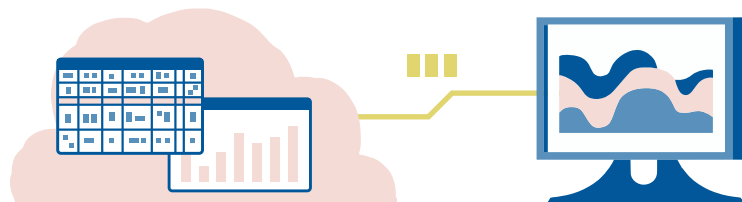
For more information, the **Survey of State Government R&D homepage** (<https://ncses.nsf.gov/surveys/state-government-research-development>) features additional details about the survey, its questionnaires, and links to related publications and products.



Data details

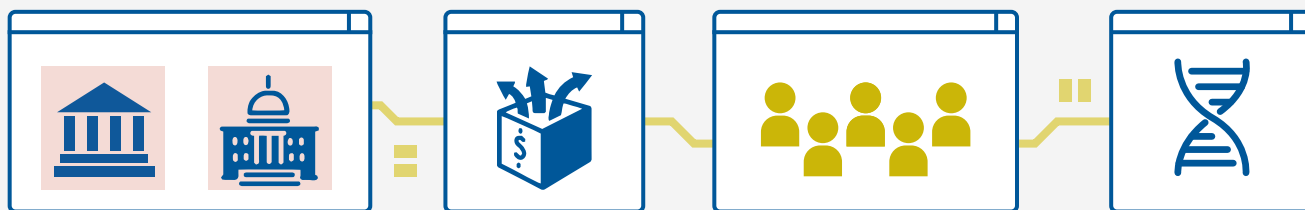
Where can I find Survey of State Government R&D data?

The Survey of State Government R&D data can be found in several places throughout the NCSES website. On the survey's [homepage](#), the Data tab offers data tables that can be downloaded by users, and the Analysis tab chronicles all NCSES publications that use the survey's data.



Agencies report information such as

- State government departments or agencies that fund or perform R&D
- Federal funds to state governments for R&D, by state and federal agency
- Capital outlays for state government R&D-related facilities
- R&D personnel and full-time equivalent by function
- R&D expenditures
 - Total expenditures
 - By governmental function
 - By source of funds
- Expenditures for R&D conducted by state agencies themselves
- Expenditures for R&D funds to external entities by state government agencies



Products supported by the Survey of State Government R&D data

Survey of State Government R&D data are used in NCSES publications, such as analytical reports and data tables. Its data also supplement *National Patterns of R&D Resources* and *Science and Engineering Indicators*.



Survey specifics

Frequency: Annual

Initial survey year: FY 2006

Reference period: State governments' fiscal years

Response unit: Departments, agencies, commissions, public authorities, or other entities that have the capacity to perform or fund R&D and where the state government maintains some control over their activities

Sample or census: Census

Population size: Approximately 500 agencies



National Center for Science and Engineering Statistics (NCSES)

For more information about NCSES's products and data collection process, visit <https://ncses.nsf.gov>. You can also explore our Surveys page at <https://ncses.nsf.gov/surveys> to learn more about NCSES surveys and the Survey of State Government R&D, as well as its methodology, survey design, and questionnaires.

NCSES 25-214