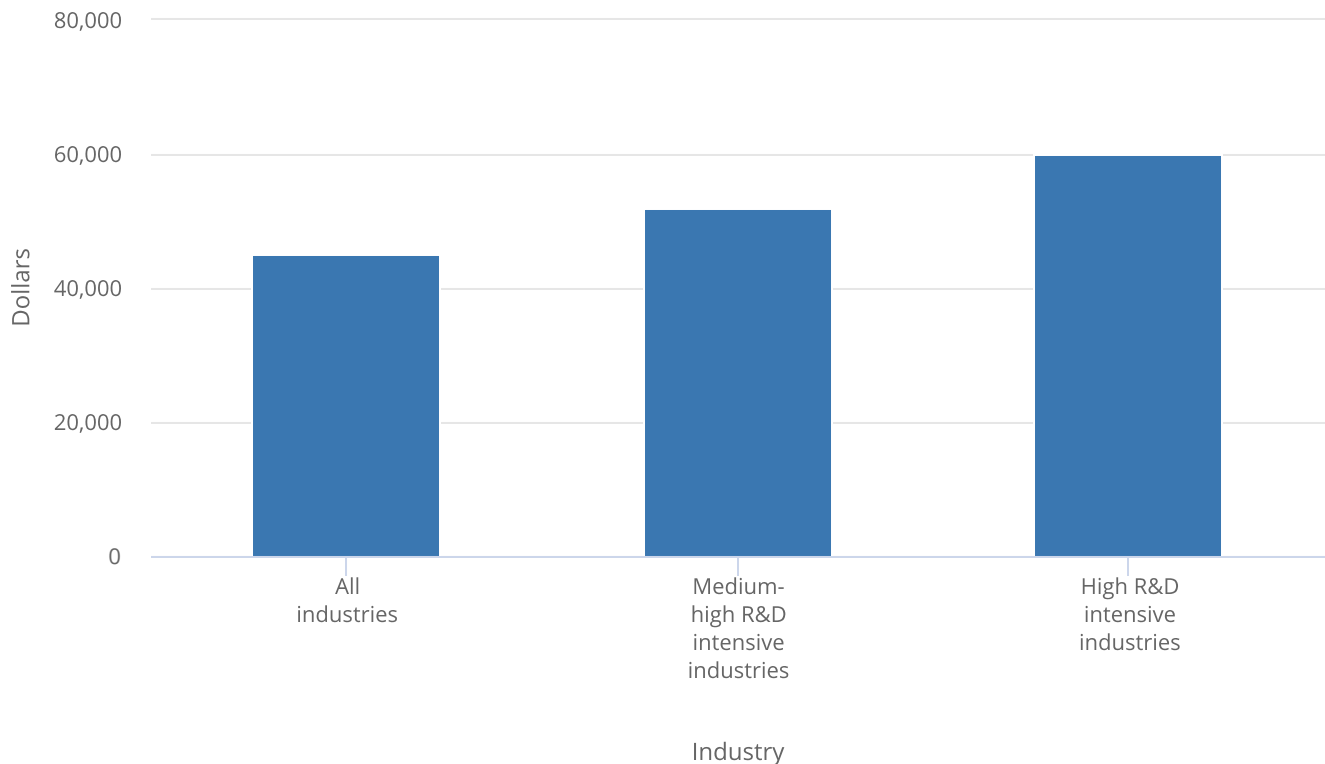


FIGURE 6-B

## Median salary of STW of U.S. KTI industries: 2017



KTI = knowledge and technology intensive; STW = skilled technical workforce.

**Note(s):**

Skilled technical workers are in occupations that employ significant levels of S&E expertise and technical knowledge and whose educational attainment is less than a bachelor's degree. Employment figures are for those aged 25 and older and do not include those employed in military occupations. KTI industries include high R&D intensive and medium-high R&D intensive industries classified by the Organisation for Economic Co-operation and Development. High R&D intensive industries include aircraft; pharmaceuticals; computer, electronic, and optical products; scientific research and development services; and software publishing. Medium-high R&D intensive industries include weapons and ammunition; motor vehicles; medical and dental instruments; machinery and equipment; chemicals and chemical products; electrical equipment; railroad, military vehicles, and transport; and IT and other information services. Industries are defined by the North American Industry Classification System (NAICS). The American Community Survey does not cover employment among self-employed workers and employment in private households (NAICS 814). In the employment total for agriculture, forestry, fishing, and hunting, only the following industries are included: logging (NAICS 1133), support activities for crop production (NAICS 1151), and support activities for animal production (NAICS 1152). As a result, the data do not represent total U.S. employment.

**Source(s):**

Census Bureau, American Community Survey (ACS) (2018), public use microdata.