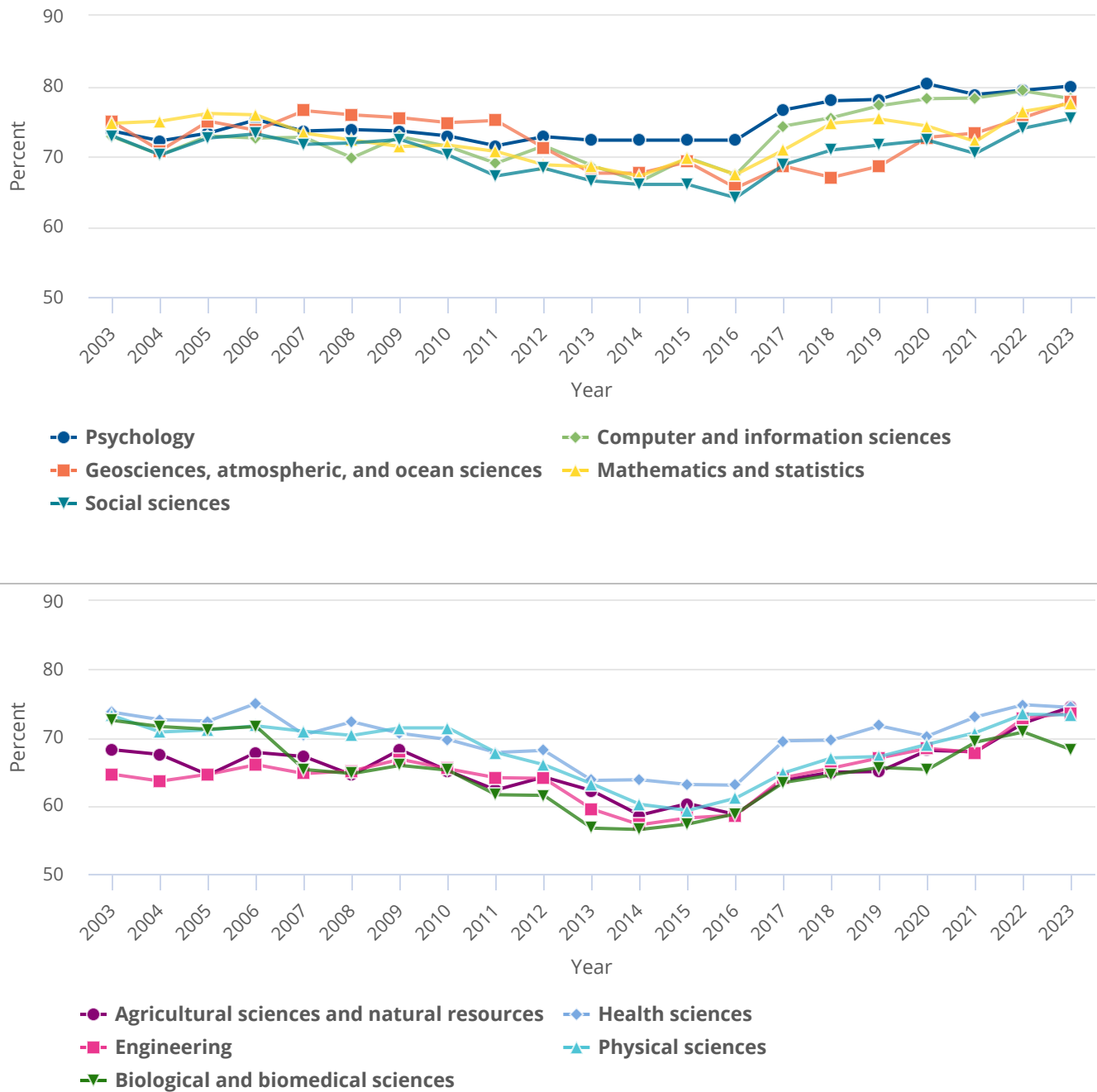


Figure 11

Definite commitments among doctorate recipients, by S&E trend broad field: 2003–23



S&E = science and engineering.

Note(s):

Definite commitment refers to a doctorate recipient who is either returning to predoctoral employment or has signed a contract (or otherwise made a definite commitment) for employment or postdoctoral study in the coming year. Percentages are based on the number of doctorate recipients who responded to the postgraduation status item. The postgraduation status question was changed in 2017 to capture postgraduation employment plans more accurately; some of the increase between 2016 and 2017 may be partly attributable to this change. The survey data collection for field of study changed in 2021, which may affect the data comparability across years. For more information, see the “Data source” section.

Source(s):

National Center for Science and Engineering Statistics, Survey of Earned Doctorates, 2023. Related detailed [table 2-1](#).